

**DG50 & DG228**  
**Pre-Engineered Cable**  
**Chain Systems**

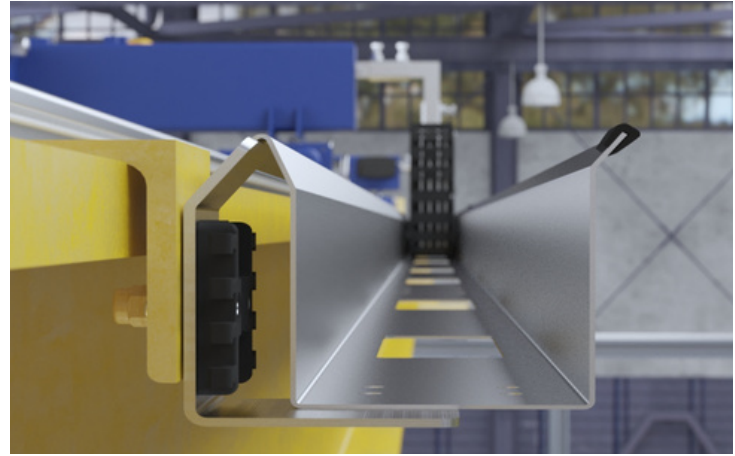
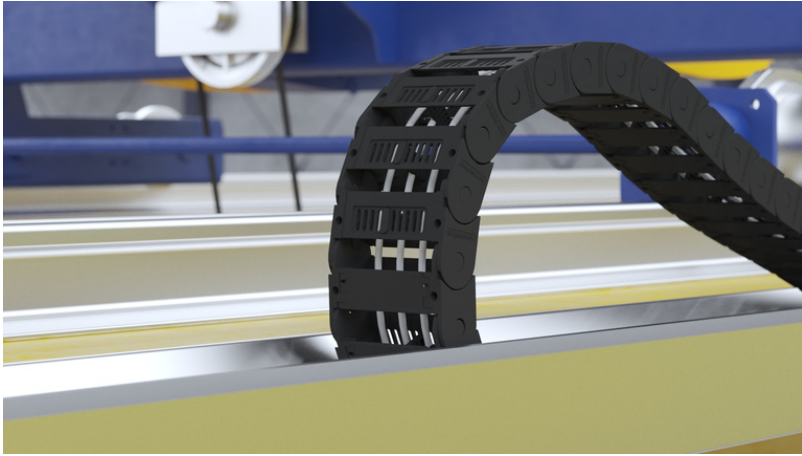
**||||| HENNIG**  
cableprotect

**FOR HOIST TROLLEYS ON DOUBLE GIRDER  
CRANES WITH BRIDGE MOUNTED CONTROLS**

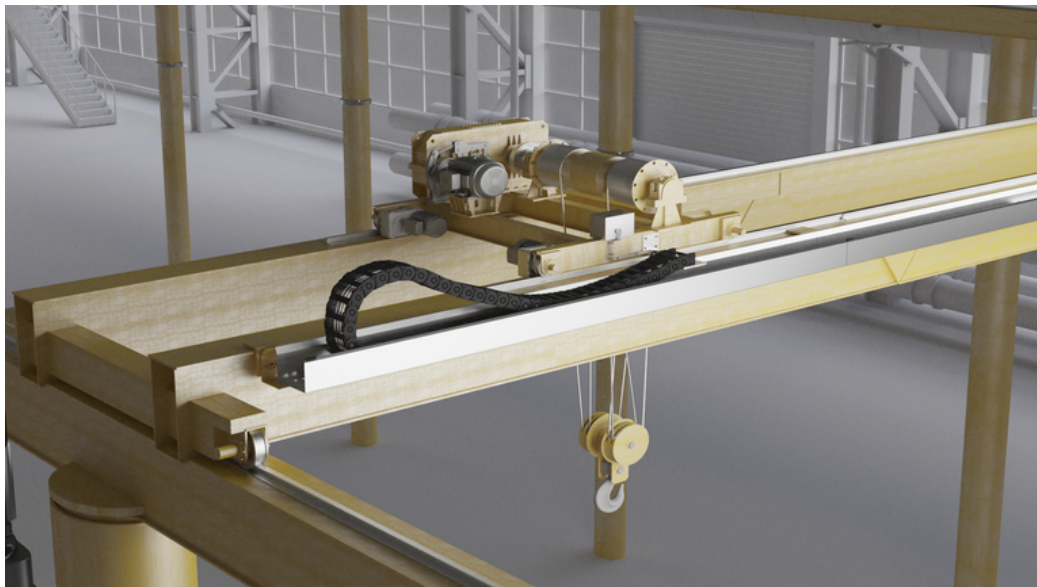
# DG50 & DG228 SYSTEMS

## WHY?

DG50 and DG228 pre-engineered cable chain systems are a perfect alternative to traditional festoon systems. This system is not only clean and compact, it also gives the crane a modern aesthetic.



There are no cable loops to limit lift heights or pose as snag hazards. The absence of loop stack up means maximum trolley travel lengths can be realized.

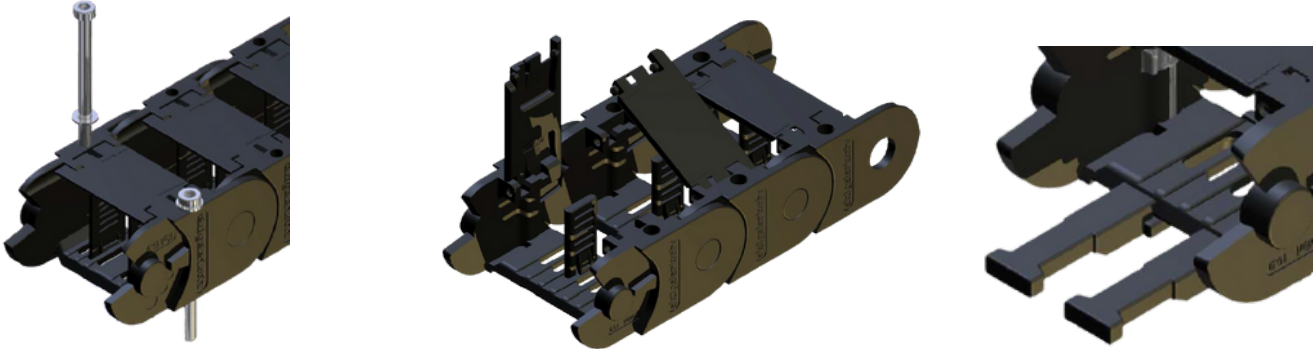


# DG50 & DG228 SYSTEMS

## KIT DESCRIPTION

### THE KIT -

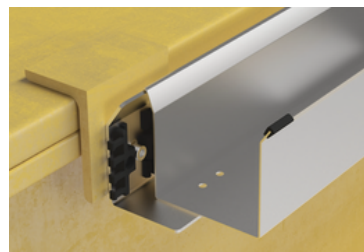
- **KOL50 or PKK228 snap open chain** - length based on trolley travel
  - Integral mounting holes (every link can be a mounting bracket), cable separators, and strain relief elements.



- **High Flex Cables** - To suit hoist and trolley motor requirements. Typical cable package will be (1) hoist motor cable, (1) hoist encoder cable, (1) cable for trolley motor leads, (1) cable for motor brakes, (1) cable for controls, limits, thermals. **Shipped installed in the chain.**
  - Lengths based on chain length plus specified pigtail lengths on each end.
  - Rugged PUR jacket, 5XD bend radius.

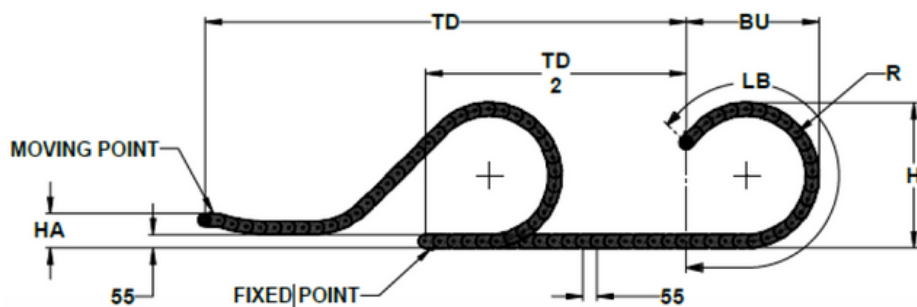
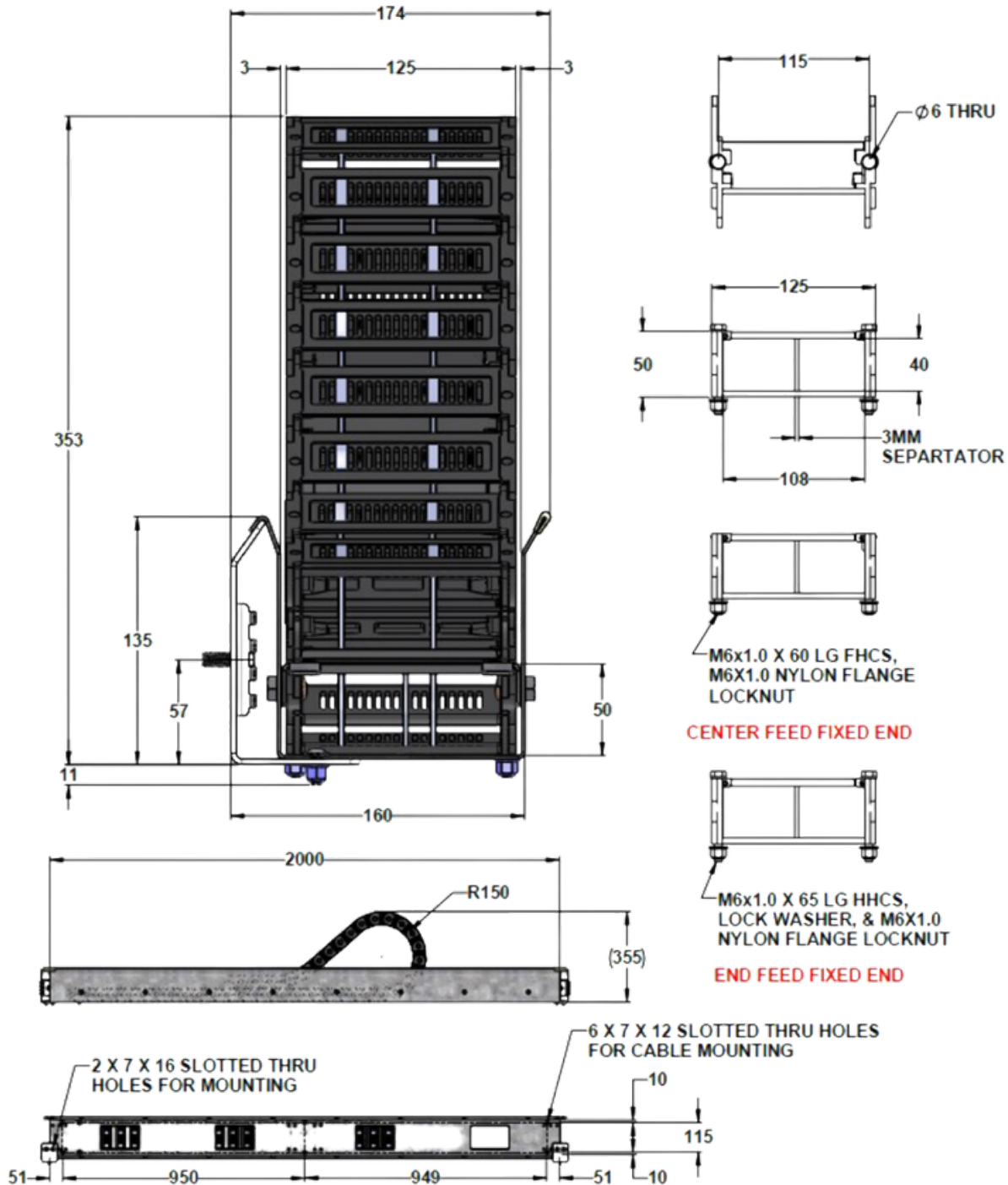


- **Compact Guide Trough** design with mounting brackets/splice kits for two meter spacing.
  - 14 gauge galvanized steel is standard, stainless steel upon request.



# DG50 & DG228 SYSTEM

## DIMENSIONS



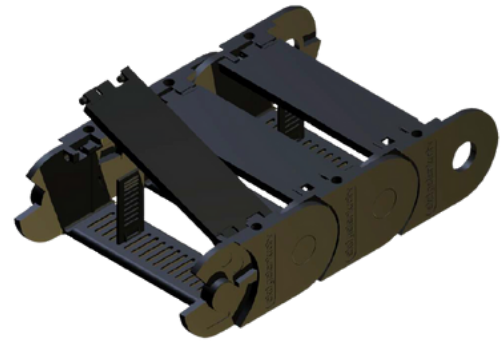
BU = 617 mm  
 LB = 1356 mm  
 HA = 175 mm  
 H = 350 mm  
 R = 150 mm

# DG50 & DG228 SYSTEMS

## CHAIN TYPES

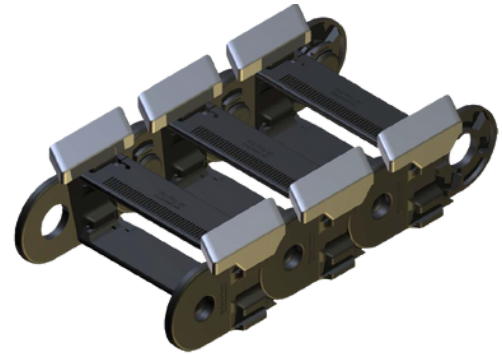
### DG50 OPTION

This cost effective option is ideal for lower duty cycle applications with slower trolley speeds. The maximum recommended travel length is 100 feet. This option is readily available and typically ships in two weeks.



### DG228 OPTION

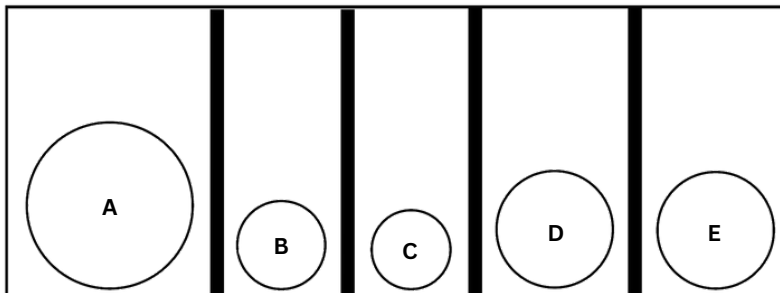
This heavy duty option is ideal for high duty cycle, high speed applications. Maximum system life can be realized due to low coefficient of friction, removable/replaceable sliders which are mounted to the inner radius of every link. Suitable for travel lengths of 100+ feet and speeds of 500 fpm.



**BOTH OPTIONS USE THE SAME STANDARD DG GUIDE TROUGH SYSTEM**

# DG50 & DG228 SYSTEMS

## CABLE PACKAGE SELECTION



- A) Main hoist motor - 4AWG to 12AWG 4C
- B) Controls, limits, thermals - 16AWG 12C
- C) Encoder - 20AWG 4 pair shielded
- D) Motor brakes - 14AWG 12C
- E) Trolley motors - 14AWG 12C

While the above is a typical cable package for a DG50 or DG228 system, any cable requirements can be accommodated provided the hoist motor cable is 4AWG 4C or smaller. In addition, the total cable fill must not exceed the suggested maximum capacity of the link.

**For larger systems, please contact us for a recommendation from our CBU program of larger, heavy duty nylon chains for heavy duty, high capacity hoist trolleys.**

# MORE SOLUTIONS



**CBU PROGRAM**

**STEEL SYSTEMS**

**MARATHON**