

# SG30 Pre-Engineered Cable Chain Systems



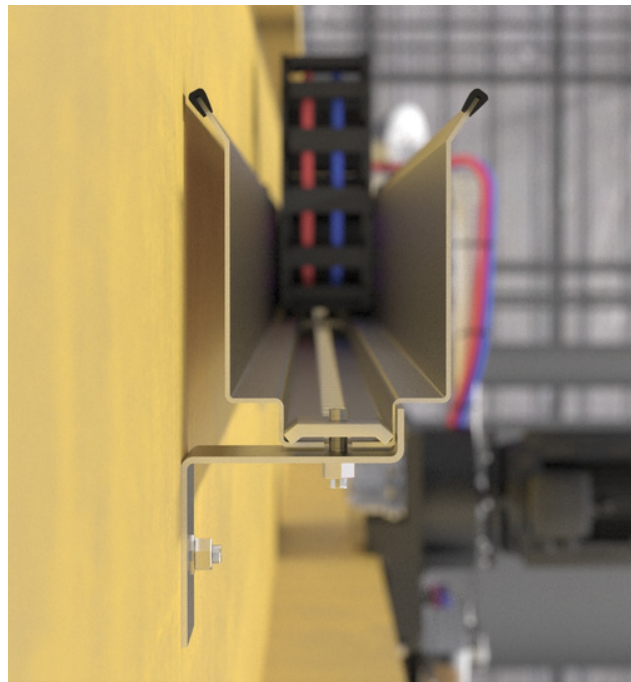
**|||||HENNIG**  
cableprotect

**FOR SINGLE GIRDER CRANES  
WITH PACKAGED HOISTS**

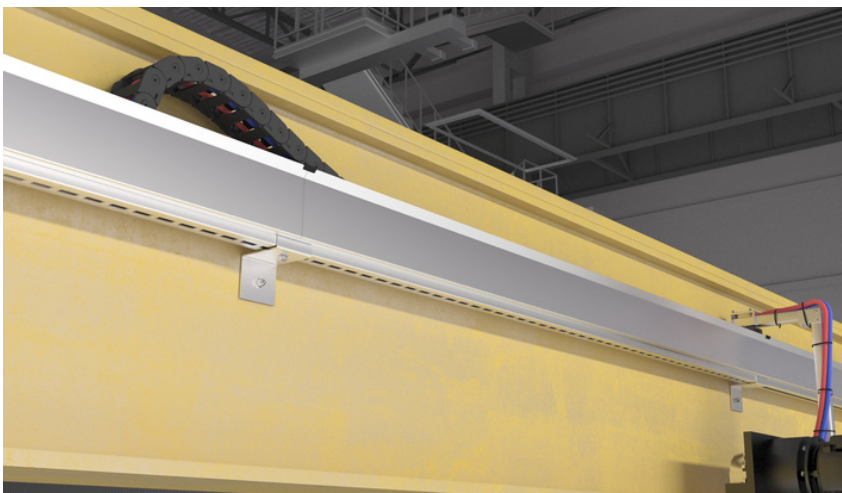
# SG30 SYSTEM

## WHY?

SG30 pre-engineered cable chain systems are a perfect alternative to traditional flat cable festoon systems. This system is not only clean and compact, it also gives the crane a modern aesthetic.



There are no cable loops to limit lift heights or pose as snag hazards. The absence of loop stack up means maximum trolley travel lengths can be realized.

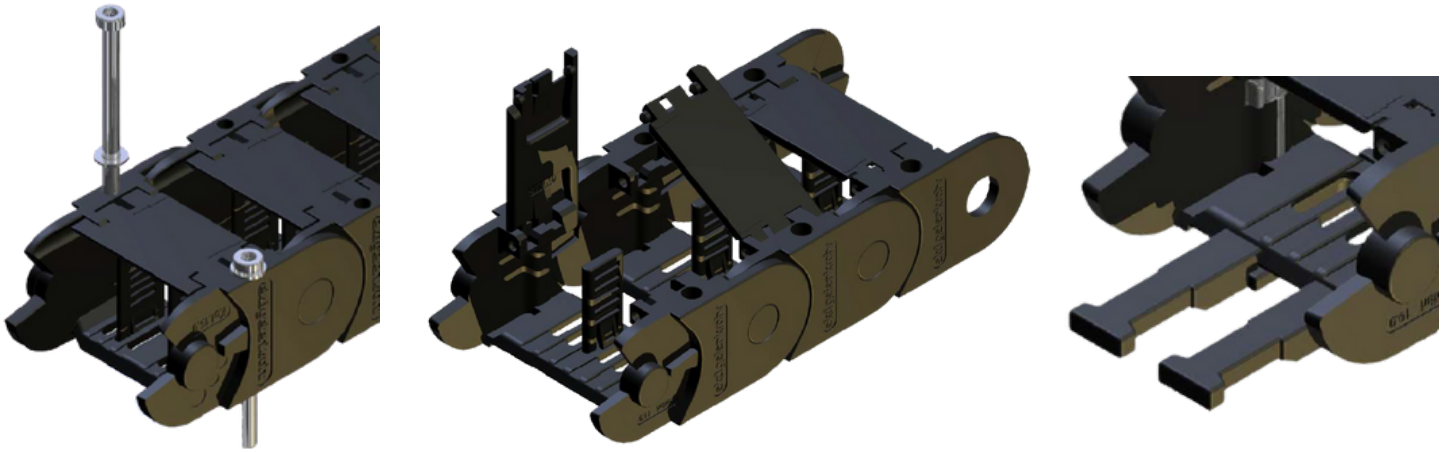


# SG30 SYSTEM

## KIT DESCRIPTION

### THE KIT -

- **KOL30 snap open chain** - length based on trolley travel
  - Integral mounting holes (every link can be a mounting bracket), cable separators, and strain relief elements



- **High Flex Cables** - One (1) 10AWG 4C cable for power, one (1) 16AWG 12C for control. **Shipped installed in the chain**
  - Lengths based on chain length plus specified pigtail lengths on each end
  - Rugged PUR jacket, 5XD bend radius

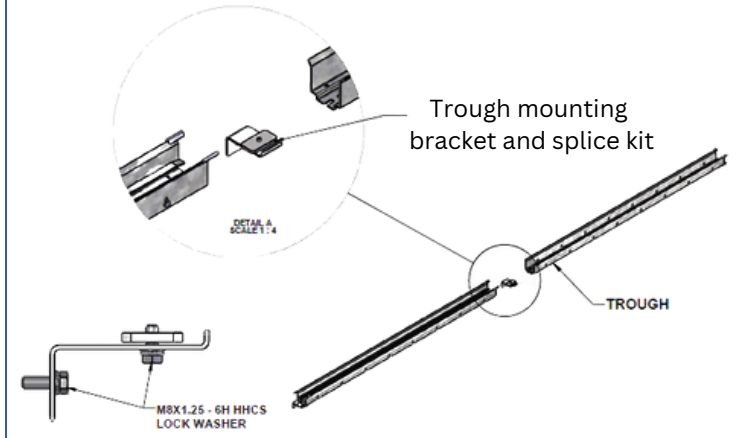
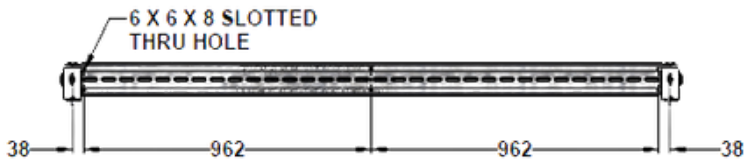
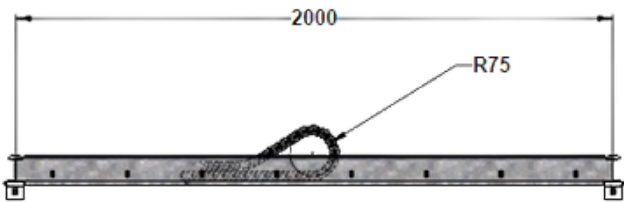
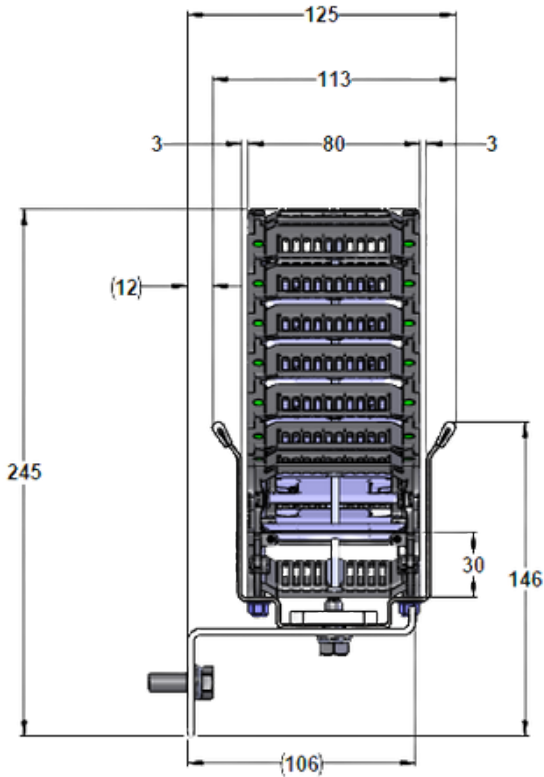


- **Web/Girder Mounted Guide Trough** with mounting brackets/splice kits for two meter spacing
  - 14 gauge galvanized steel is standard, stainless steel upon request

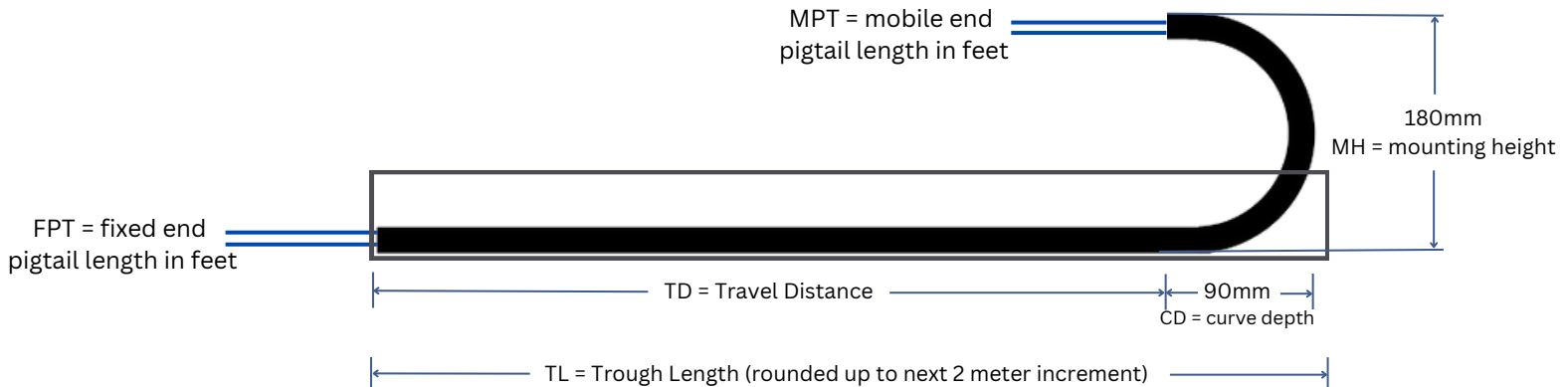
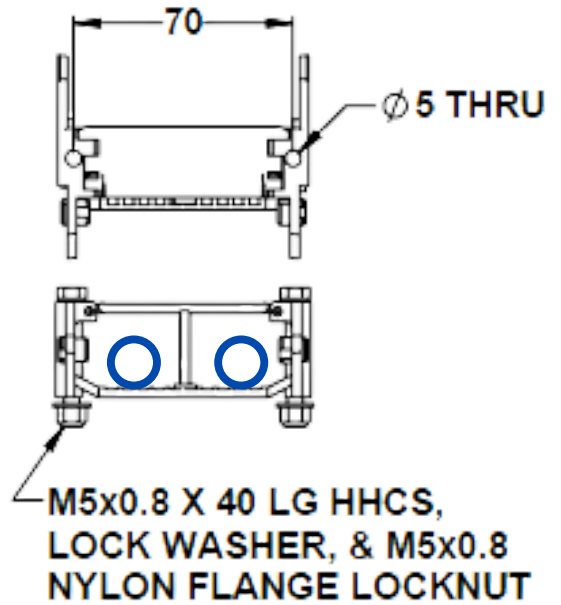


# SG30 SYSTEM

## DIMENSIONS



### Fixed and Mobile End Mounting Hole Pattern and Fastener Details



# SG30 SYSTEM

## ORDERING CODE AND BOM EXAMPLE

### ORDERING CODE TEMPLATE-

**SG30 - [TL] - [MPT] - [FPT]**

TRAVEL LENGTH  
IN FEET

MOBILE END PIGTAIL  
IN FEET

FIXED END PIGTAIL  
IN FEET

### EXAMPLE OF CODE AND CORRESPONDING BILL OF MATERIALS -

**SG30 - 50 - 15 - 10**

### BILL OF MATERIALS -

1. SGKOL30 chain	15.5 meters
2. KOL30 vertical separator (1 EOL)	222 pcs
3. KOL30 strain relief element (2 each end)	4 pcs
4. 10AWG 4C high flex cable (installed in chain)	24 meters
5. 16AWG 12C high flex cable (installed in chain)	24 meters
6. SG30 guide trough	16 meters
7. SG30 trough mounting bracket/splice kit	9 pcs
8. SG30 trough clip	14 pcs

*While 10AWG 4C and 16AWG 4C is a very typical cable package to supply power and control to a packaged hoist, we can accommodate any specific cable package. For other configurations, please contact us.*

# MORE SOLUTIONS



**CBU PROGRAM**

**STEEL SYSTEMS**

**MARATHON**